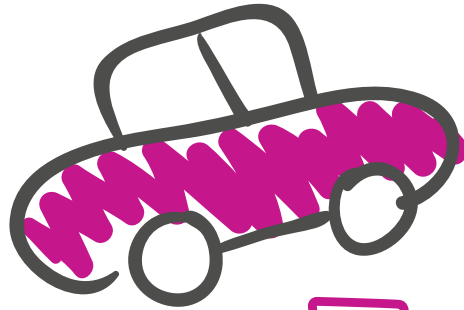


# à L'aventure !

Joue aux mots casés avec les forêts corses et trouve ce qu'il ne faut jamais oublier de faire en voiture.

FORÊTS  
 BAVELLA  
 ASCO  
 VALDU NIELLU  
 AITONE  
 OSPEDALE  
 VIZZAVONA



A crossword puzzle grid with various colored squares. The grid consists of 11 columns and 11 rows. The colors of the squares are as follows:

- Row 1: (1,1) empty, (1,2) empty, (1,3) empty, (1,4) empty, (1,5) empty, (1,6) orange, (1,7) empty, (1,8) empty, (1,9) empty, (1,10) empty, (1,11) orange.
- Row 2: (2,1) green, (2,2) empty, (2,3) empty, (2,4) empty, (2,5) empty, (2,6) empty, (2,7) empty, (2,8) empty, (2,9) empty, (2,10) empty, (2,11) empty.
- Row 3: (3,1) empty, (3,2) empty, (3,3) empty, (3,4) empty, (3,5) empty, (3,6) empty, (3,7) empty, (3,8) yellow, (3,9) empty, (3,10) grey, (3,11) empty.
- Row 4: (4,1) empty, (4,2) empty, (4,3) empty, (4,4) empty, (4,5) empty, (4,6) empty, (4,7) empty, (4,8) empty, (4,9) empty, (4,10) empty, (4,11) empty.
- Row 5: (5,1) empty, (5,2) empty, (5,3) empty, (5,4) empty, (5,5) empty, (5,6) empty, (5,7) empty, (5,8) empty, (5,9) empty, (5,10) empty, (5,11) empty.
- Row 6: (6,1) empty, (6,2) empty, (6,3) empty, (6,4) empty, (6,5) empty, (6,6) empty, (6,7) empty, (6,8) empty, (6,9) empty, (6,10) empty, (6,11) empty.
- Row 7: (7,1) empty, (7,2) empty, (7,3) empty, (7,4) empty, (7,5) empty, (7,6) empty, (7,7) empty, (7,8) empty, (7,9) empty, (7,10) empty, (7,11) empty.
- Row 8: (8,1) empty, (8,2) empty, (8,3) empty, (8,4) empty, (8,5) empty, (8,6) empty, (8,7) empty, (8,8) empty, (8,9) empty, (8,10) empty, (8,11) empty.
- Row 9: (9,1) empty, (9,2) empty, (9,3) empty, (9,4) empty, (9,5) empty, (9,6) empty, (9,7) empty, (9,8) empty, (9,9) empty, (9,10) empty, (9,11) empty.
- Row 10: (10,1) empty, (10,2) empty, (10,3) empty, (10,4) empty, (10,5) empty, (10,6) empty, (10,7) empty, (10,8) empty, (10,9) empty, (10,10) empty, (10,11) empty.
- Row 11: (11,1) empty, (11,2) empty, (11,3) empty, (11,4) empty, (11,5) empty, (11,6) empty, (11,7) empty, (11,8) empty, (11,9) empty, (11,10) empty, (11,11) empty.

Additional colored squares are located at: (1,3) blue, (2,3) blue, (3,3) blue, (4,3) blue, (5,3) blue, (6,3) blue, (7,3) blue, (8,3) blue, (9,3) blue, (10,3) blue, (11,3) blue. A compass rose is located in the bottom right area of the grid.

JEU



QUESTION

Quelle est la plus grande forêt de Corse ?

.....

Réponse : la ceinture de sécurité

Réponse : la plus grande forêt de Corse est Asco avec une superficie de 5783ha

